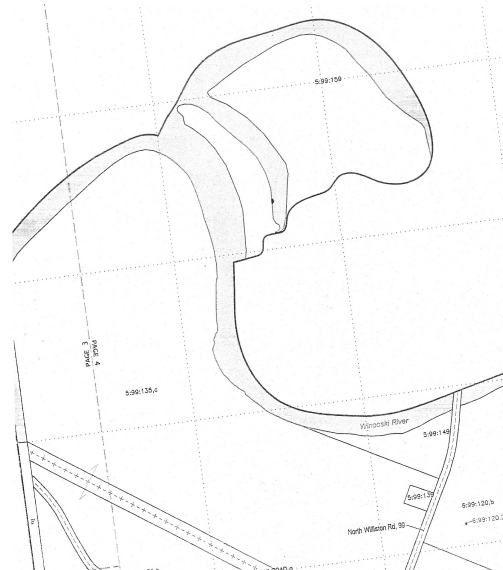


Addendum to THE GREAT FRESHET OF 1830 - PART TWO published in the Fall 2020 edition of the ECHO.

The maps shown in the Fall 2020 edition of the ECHS ECHO to illustrate the town line controversy were incorrectly presented with the Essex tax map shown twice. Reproduced here is the correct display of maps showing the town line between Essex and Williston as it is incorrectly drawn (dotted line) on the Essex tax map and correctly drawn (solid line) on the Williston tax map.



Essex tax map 2019. Fay Island upper left shown in Essex. Town line shown in middle of current Winooski River channel.



Williston tax map 2019. Williston Town line loops around Fay Island following the center of the old river channel.